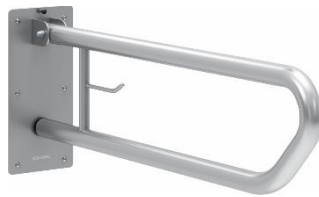


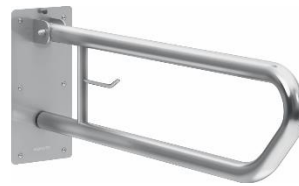
GW11 07 800mm folding grab bar



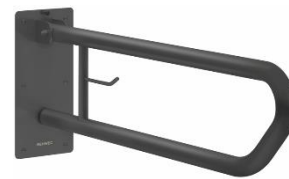
GW11 07 03 00
AISI 201 stainless steel
Epoxy white



GW11 07 04 01
AISI 304 stainless steel
Brushed satin

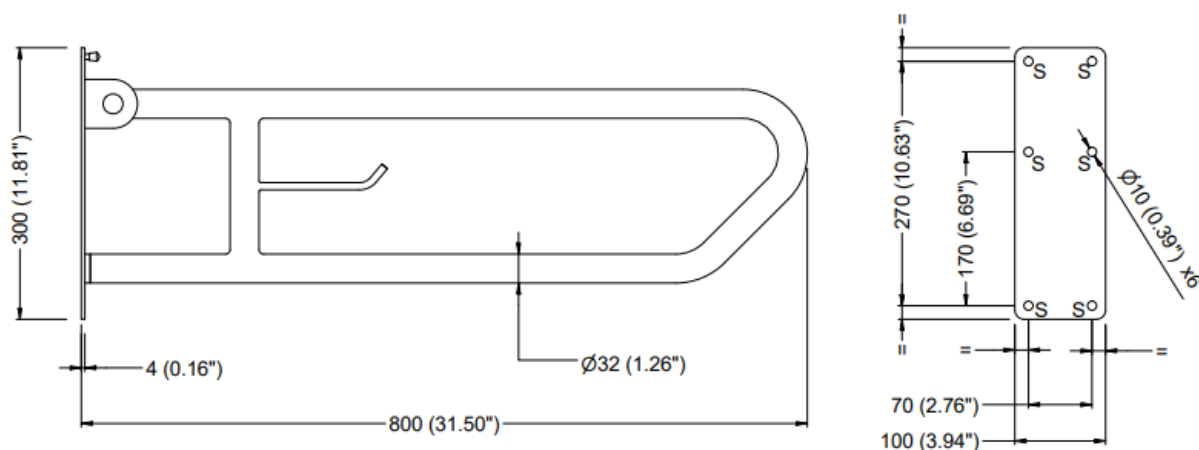


GW11 07 04 02
AISI 304 stainless steel
Polished



GW11 07 04 03
AISI 304 stainless steel
Black matt

BACK VIEW WALL MOUNTING



TECHNICAL DATASHEET

COMPONENTS AND MATERIALS

- Grab bar – 1.5mm tube thickness with 32mm outside diameter. AISI 304 stainless steel (product codes GW11 07 04 01, GW11 07 04 02 & GW11 07 04 03), AISI 201 stainless steel (GW11 07 03 00). Fixed to wall support flaps with screws. Includes toilet paper holder.
- Wall support – 4mm AISI 304 stainless steel. Includes 6 holes for fixing to wall with supplied screws. Two AISI 304 stainless steel flaps fix the folding bar to wall support. A rubber bumper prevents the bar from hitting the wall when placed vertically.
- Fixings set – 6 mounting screws 10x50mm and 6 wall plugs.

OPERATION

Folding bar is manually raised (vertical position) for approach or departure and lowered (horizontal position) for support. Once folding bar is raised, counterweighted design prevents grab bar from falling back down.

GENWEC grab bars support static and dynamic loads of 120Kg if properly installed with fixings set supplied.

SAFETY WARNING: Load supported depends on type of wall. Load supports supplied by GENWEC refer to grab bars being installed in brick walls with screws and wall plugs supplied. Contact manufacturer when used on other type of walls.

MOUNTING

Use holes on wall support as template to mark position on wall. Only use supplied screws for correct installation to brick wall.

ARCHITECTURAL SPECIFICATION

GENWEC 800mm folding bar. Manufactured in AISI 304 stainless steel (product codes GW11 01 04 01, GW11 01 04 02, GW11 07 04 03) or AISI 201 stainless steel (GW11 01 03 00). Grab bar must have a thickness of 1.5mm and 32mm outside diameter. Shall include a toilet paper holder. Wall support thickness shall be of 4mm. Wall support shall have 6 holes for correct mounting to wall by using supplied M10x50mm screws. Shall include a rubber bumper to prevent bar from hitting the wall when placed vertically. Unit shall support static and dynamic loads of 120Kg.

SPARE PARTS

GW11 07 90 00 Fixings set