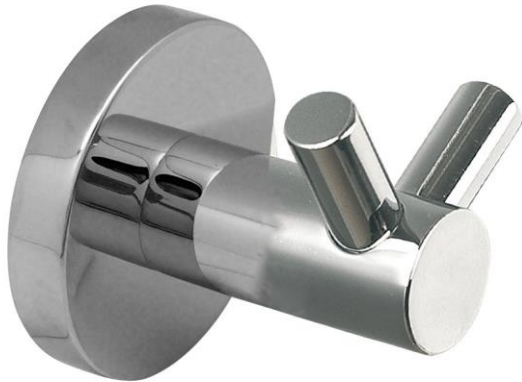


BATHROOM ACCESSORIES **GW05 01 05 02B “CARTAGO SERIES” double hanger**



Product description

Double hanger
Material: Injected zinc
Finish: Chrome finish
Cartago Series

Technical specifications:

“Cartago Series” double hanger. The product consists of a wall mount, a wall plate covering the wall mount and a double hanger. The hanger is made of injected zinc, has a central cylinder and 2 small cylinders in V shape to help hang things. The wall plate covering the wall mount, which is fastened to the fixing support, is made of injected zinc and has a thickness of 1.5 mm. The wall mount, made of carbon steel, has two holes so it can be fixed to the wall by means of screws. The assembled set has a chrome finish plated with 3.5-6 µm nickel + 2-3 µm chromium that provides it an appropriate resistance against corrosion. The product is anchored to a brick wall by means of 2 nylon wall plugs and 2 screws. The overall dimensions of the product are 56 x 56 x 48 mm. The accessory model for the HORECA sector is GW05 01 05 02B, manufactured by GENWEC WASHROOM S.L. - Av. Joan Carles I, 46-48 08908 L'Hospitalet de Llobregat, Barcelona (Spain).

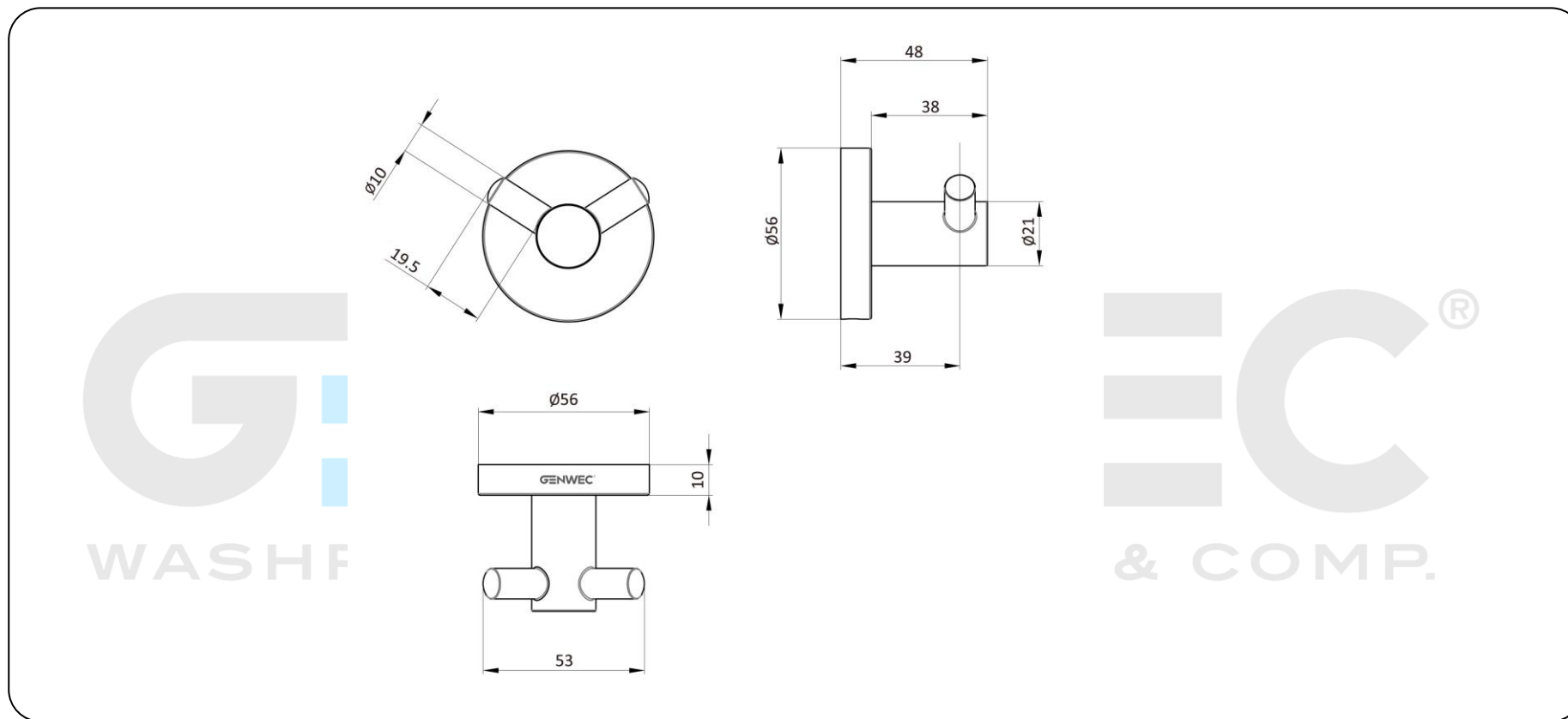
Technical characteristics

Product specifications

Carbon steel wall mount.
Double hanger made of injected zinc with a 21mm diameter.
Wall plate made of injected zinc with a 56 mm diameter.
The metal parts have a chrome finish plated with 3.5-6 µm nickel + 2-3 µm chromium.

Packaging specifications

- Type of individual package: Individual cardboard box and bubble wrap



Cleaning: A cotton cloth slightly dampened in a soapy solution is recommended. Then dry off.