

GW03 02 Jumbo roll paper dispenser



GW03 02 04 01
AISI 304 Brushed

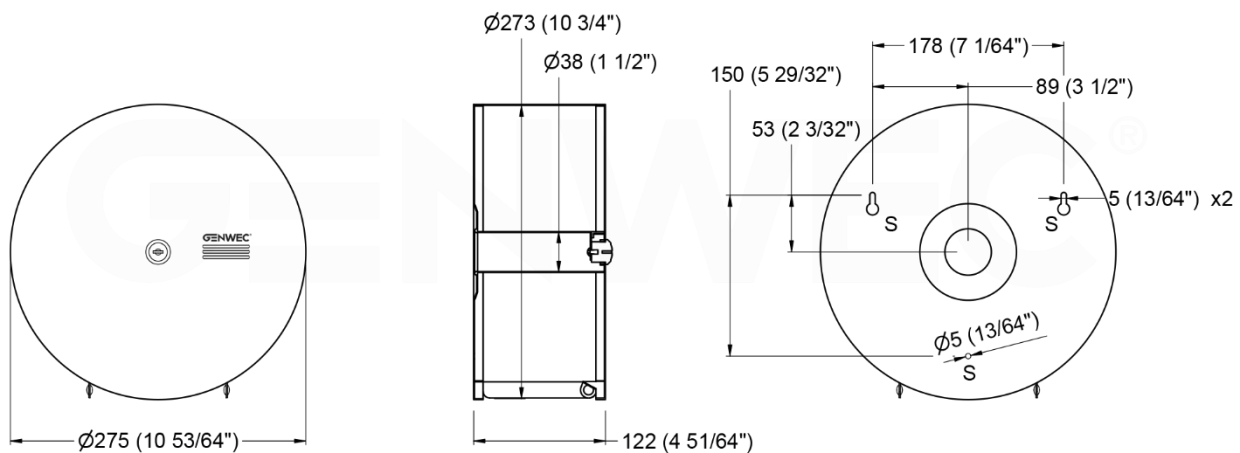


GW03 02 04 02
AISI 304 Bright



GW03 02 04 03
AISI 304 Matt Black

BACK VIEW WALL MOUNTING



Dimensions: $\pm 3\%$

TECHNICAL DATASHEET

COMPONENTS AND MATERIALS

- Mounting base – 1.2mm AISI 304 stainless steel, \varnothing 275mm. Smooth edges for safety use.
- Lid – One piece, 0.8mm AISI 304 stainless steel, fully sealed. Horizontal slot reveals content level inside dispenser. Supplied with a central lock to prevent vandalism. Smooth edges for safety use.
- Shaft – One piece, 1.0mm AISI 304 stainless steel, \varnothing 38mm. Equipped with two rubber-o-rings as anti-spin retainers.
- Fixings set – Two keys for lid opening (one as spare), three \varnothing 6mm wall plugs, three \varnothing 4mm screws.

OPERATION

Door unlocks with one of two keys supplied with the unit and swings vertically for loading dispenser. Central shaft accommodates one toilet roll up to \varnothing 260mm and with a minimum \varnothing 40mm core. Rubber-o-rings are placed in each side of core to prevent roll spin. Horizontal slot reveals the paper level for easy control.

MOUNTING

Use technical design provided in technical sheet. Drill three \varnothing 6mm holes to suit provided wall plugs (6mm) and screws (4mm) at S points indicated in technical design. Recommended mounting height is 650mm from floor to unit centre.

ARCHITECTURAL SPECIFICATION

Genwec Jumbo roll paper dispenser shall be 0.8mm AISI 304 stainless steel. Edges shall be smooth for user safety. Front lid shall be equipped with a central lock to prevent vandalism and a horizontal slot to control paper level. Shaft shall be AISI 304 stainless steel \varnothing 38mm and equipped with two rubber-o-rings to avoid paper roll spin. Shaft shall be able to accommodate a \varnothing 260mm jumbo roll and with a minimum \varnothing 40mm core.

SPARE PARTS

- GW03 02 90 00 Lock key set
- GW03 02 90 01 Screwing set
- GW03 02 90 02 Rubber roll fix for