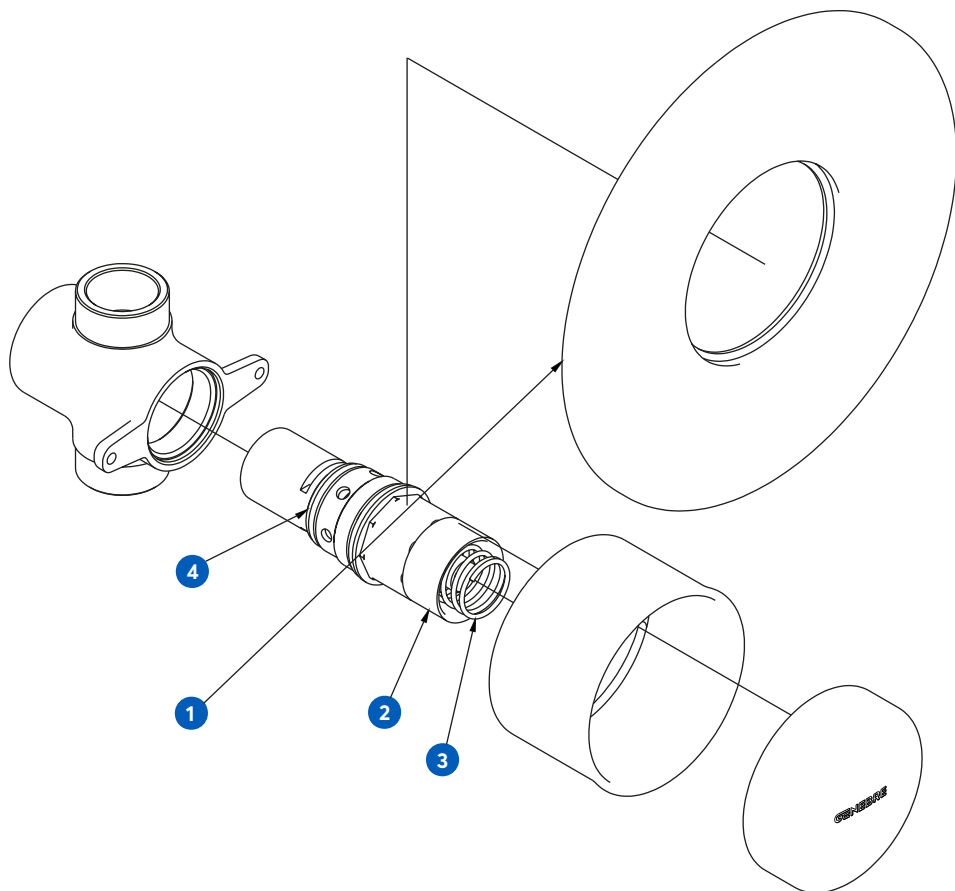


INSTALACIÓN DE UN CUERPO EMPOTRADO MURAL

BUILD-IN TAP ASSEMBLING INSTALLATION

IG14006-01

DESPIECE / PARTS

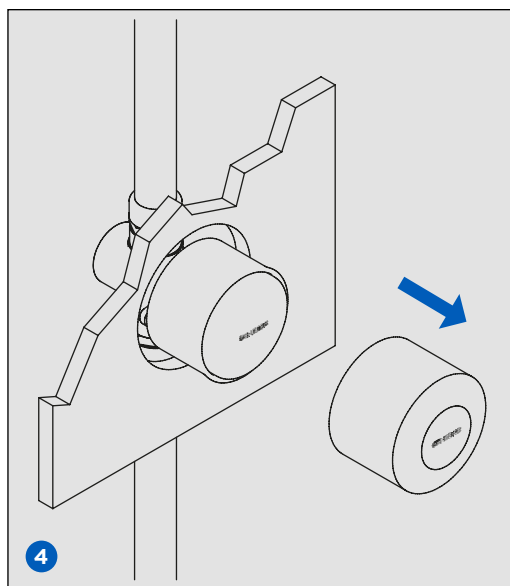
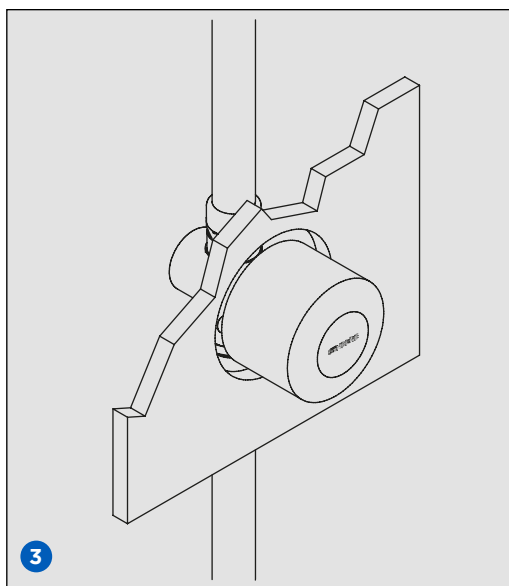
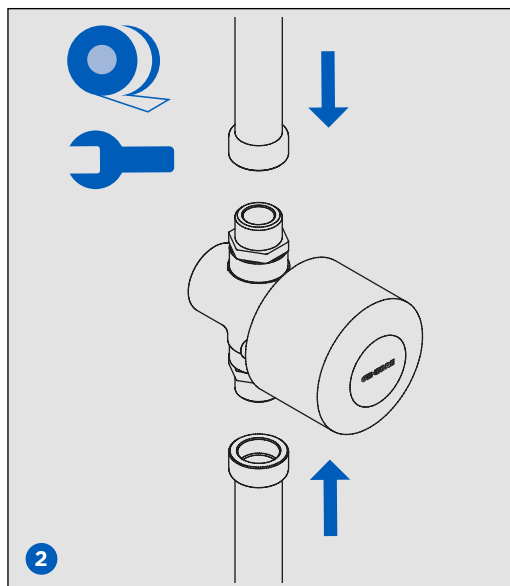
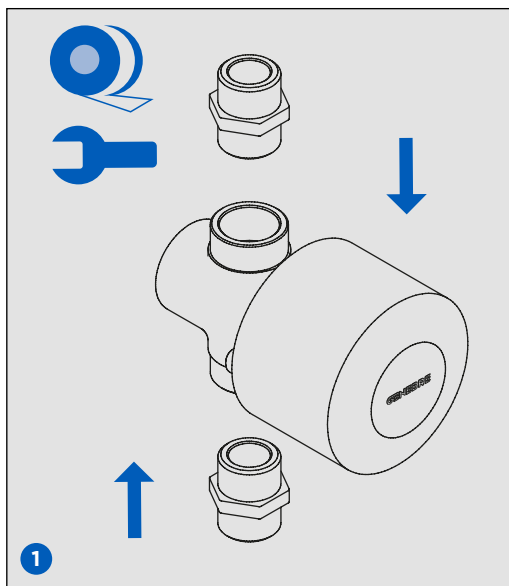


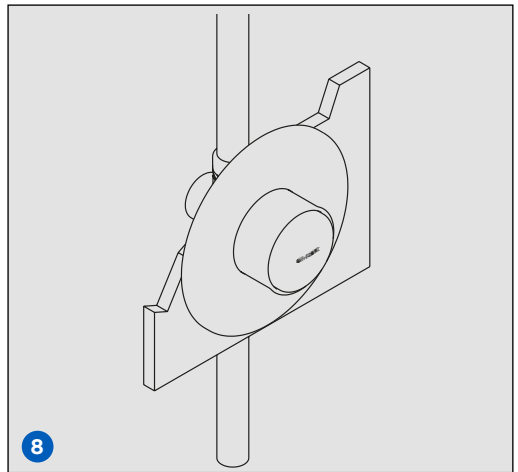
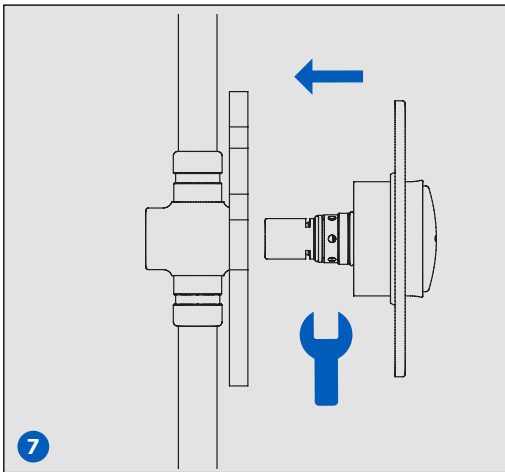
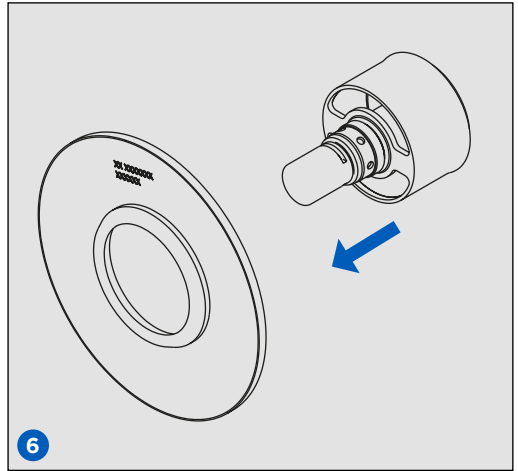
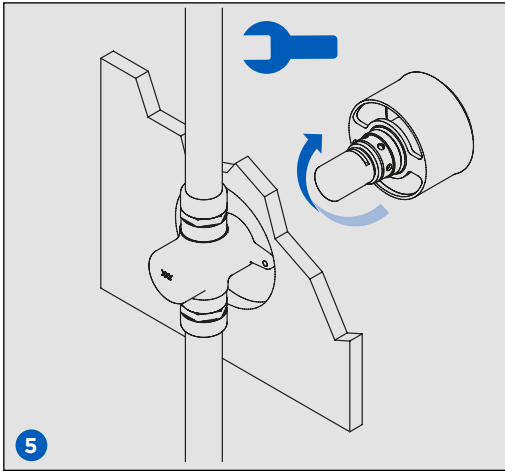
RECAMBIOS / SPARE PARTS

1. Placa / Plate
2. Cartucho temporizado / Timing cartridge
3. Set de muelles / Spring set
4. Set de juntas / Gasket set

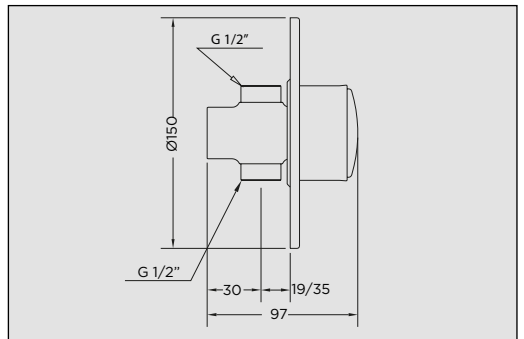
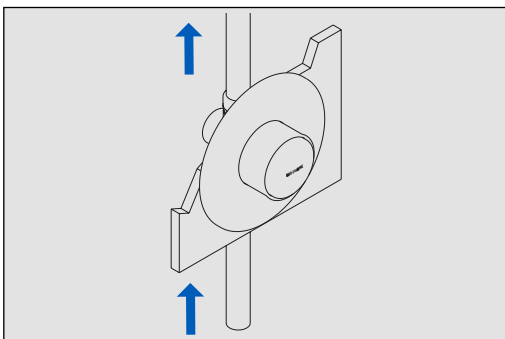
Precaución: ANTES de realizar el montaje asegúrese de que los elementos de corte están en la posición "CERRADO" para evitar inundaciones, y que no haya suciedad ni cuerpos extraños en las conexiones o en las tomas.

Caution: Before assembling the product, make sure that the flow valve is "CLOSED", and make sure that there aren't foreign bodies in the water supply connections




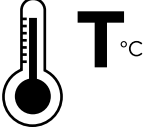
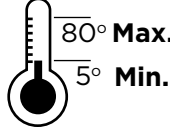
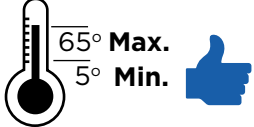




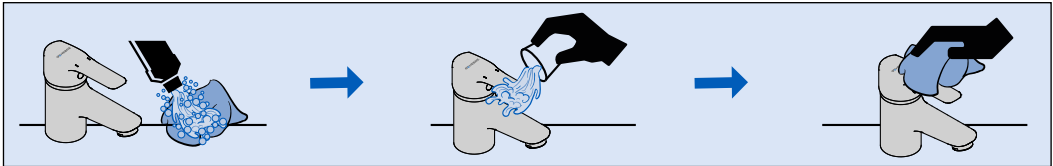
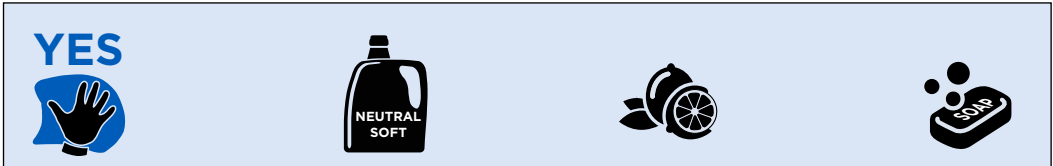
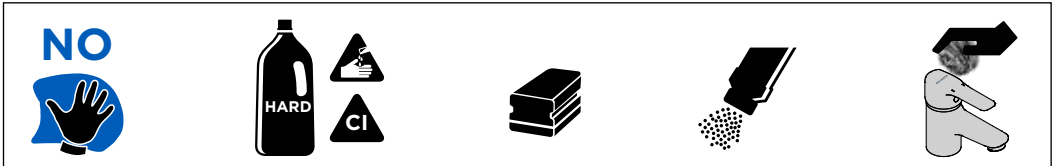
FUNCIONAMIENTO / INSTRUCTIONS





CONDICIONES DE SERVICIO DE LA INSTALACIÓN
INSTALLATION WORKING CONDITIONS



		
		

LIMPIEZA / CLEANING



SÍMBOLOS / SYMBOLS

	Sentido de giro / Turning direction
	Fijar con la mano / Fix by hand

	Fijar con una herramienta / Fix by tool
	Cinta de teflón / Teflon tape

GENEBRE

Edificio Genebre. Av. Joan Carles I, 46-48 - 08908 L'Hospitalet de Llobregat - Barcelona (Spain)
 Tel.: +34 902 504 203